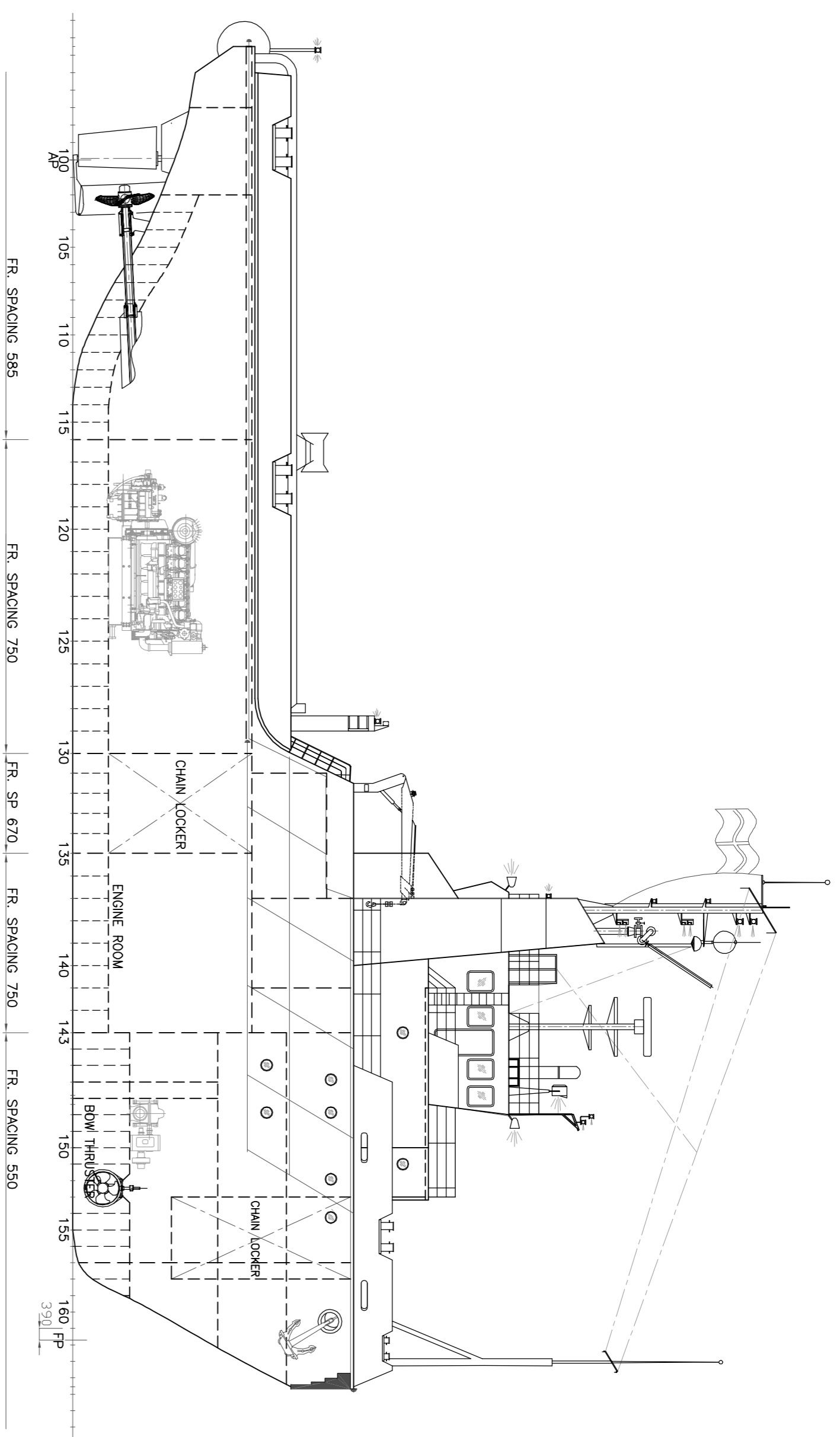
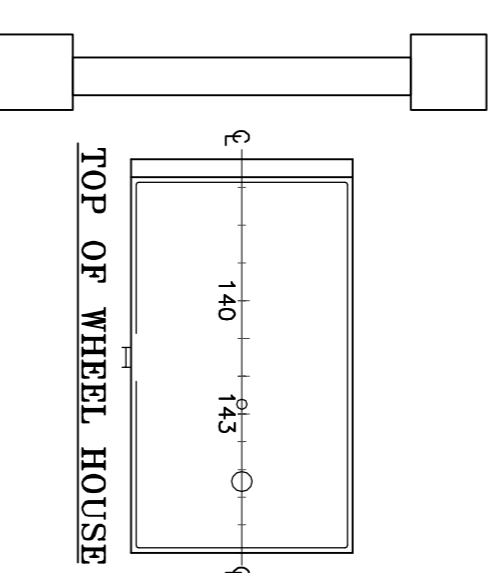


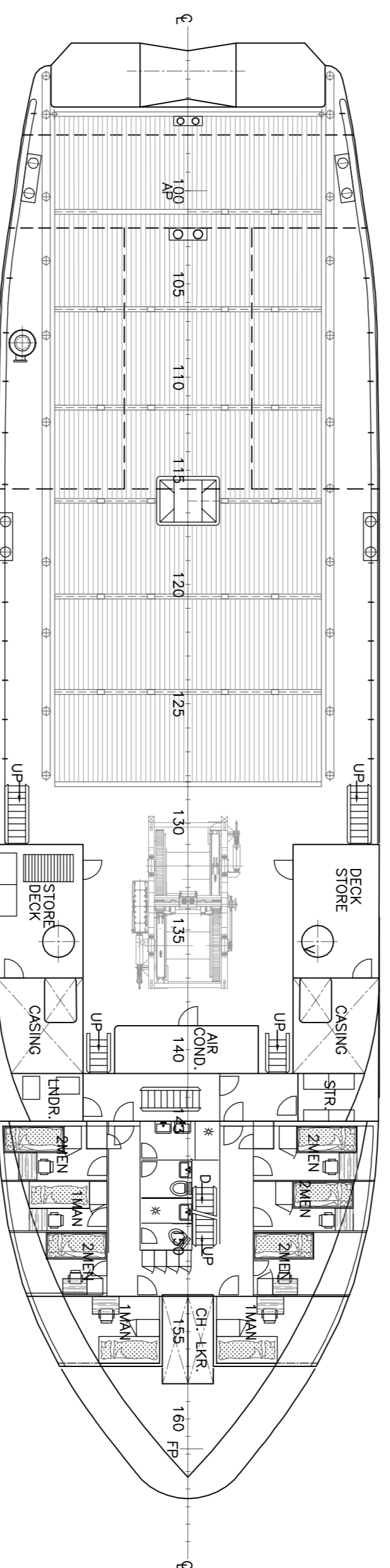
GENERAL ARRANGEMENT PLAN - SEA DIAMOND X



PROFILE

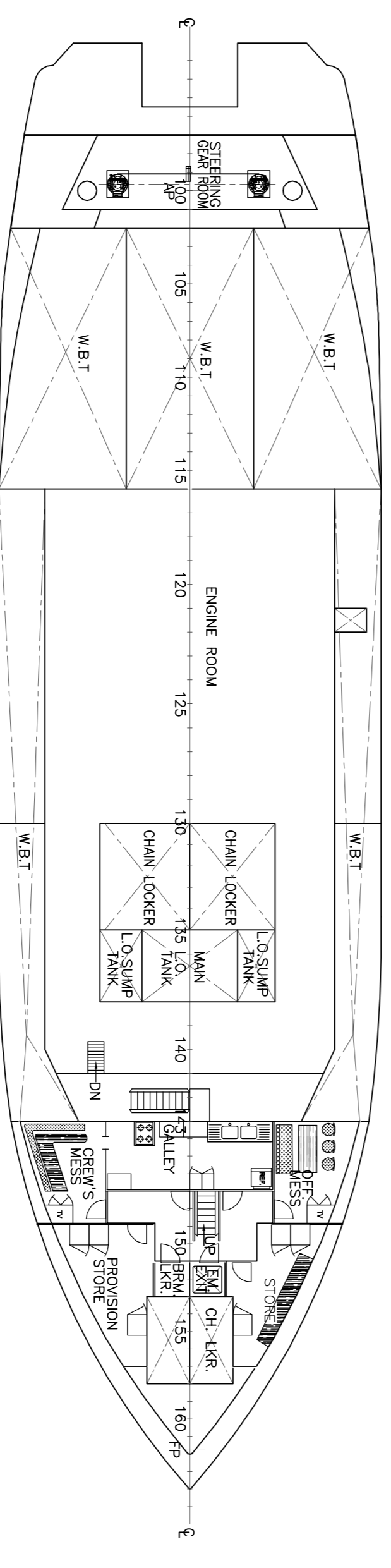
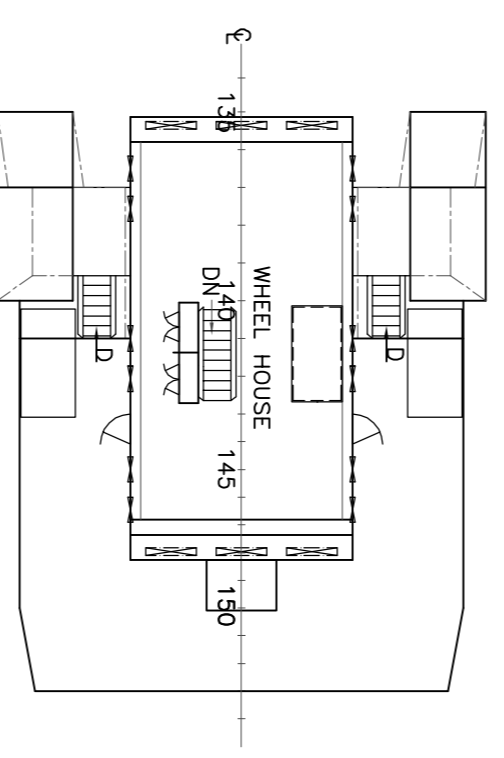


TOP OF WHEEL HOUSE



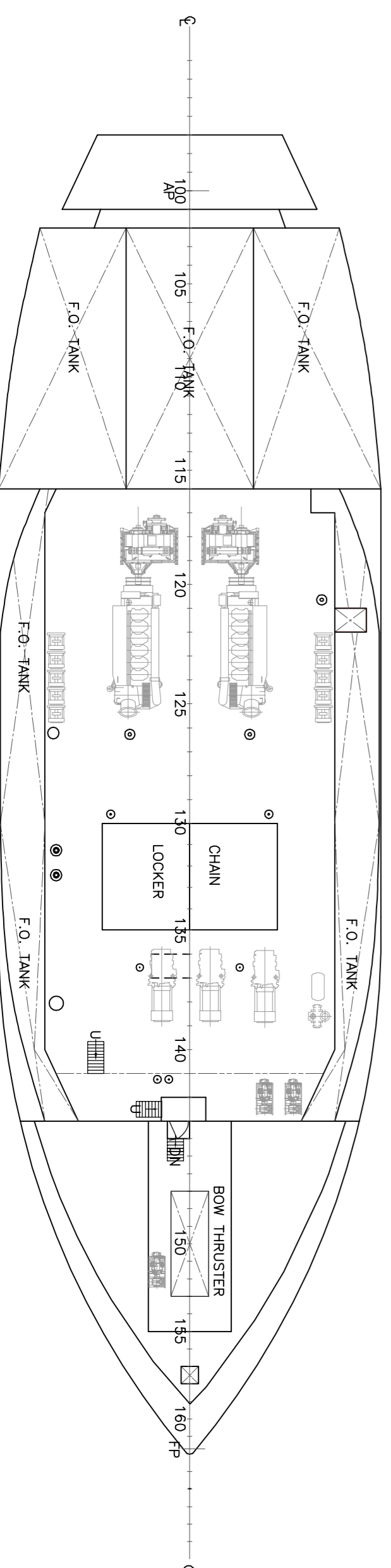
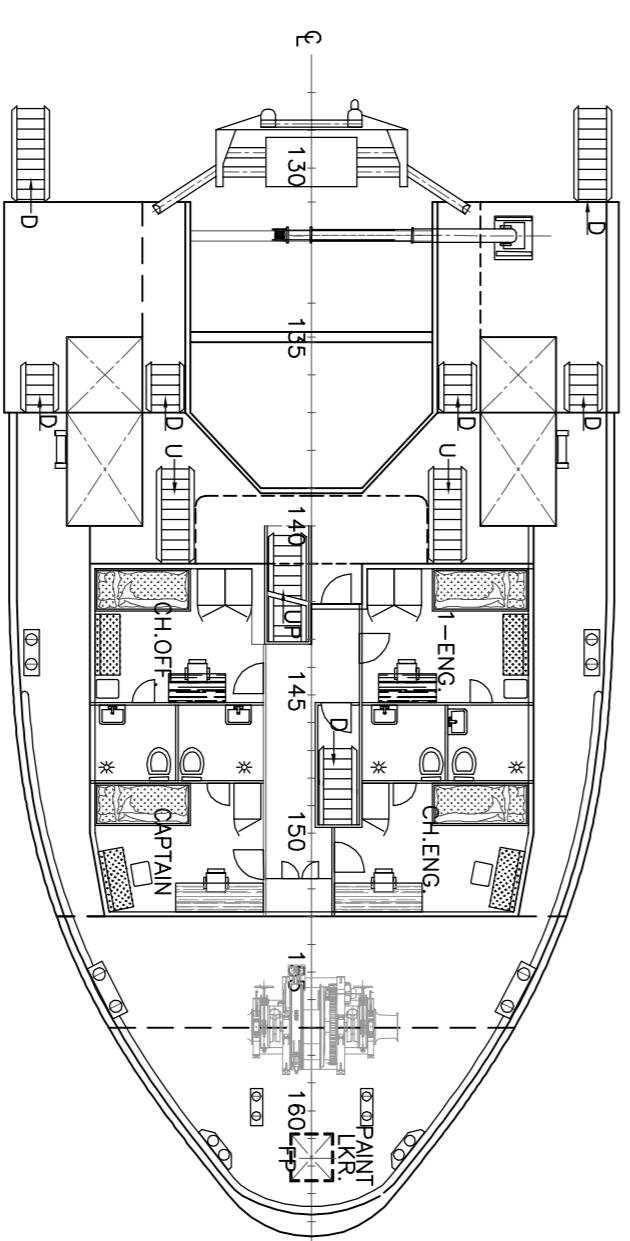
UPPER DECK

NAV. BRIDGE



SECOND DECK

FORECASTLE DECK



TANKTOP

MAIN PARTICULARS

LENGTH O. A. :	45.70	m
LENGTH B.P. :	39.50	m
BREADTH MLD. :	12.00	m
DEPTH :	6.00	m
DRAFT MAX :	5.083	m

SEA DIAMOND X

REV	DESCRIPTION	DATE	SIGN

<p>ARIES MARINE & ENGG. SERVICES P.O. BOX - 24496, SHARAH, U.A.E. Tel: 00971(0)6 5614166, Fax: 00971(0)6 5614167 Website: ariesmar.com, Email: ariesmar@emirates.net.ae</p>		<p>ARIES MARINE & ENGG. SERVICES and one furnished on a confidential basis with an expressed understanding that they will not be copied, in any manner, used for production, or otherwise disseminated, or used to disclose these contents hereof to any other parties except for those specific purposes for which this drawing was issued.</p>
<p>GENERAL ARRANGEMENT PLAN</p>		
VESSEL NAME : SEA DIAMOND X	DATE : 09.04.06	DWG. No : DNB124/202
DRAWN BY : ABTR	JOB No : DNB124	SHEET : 01 OF 01
CHECKED BY : JC	SCALE : 1:150	REV : 0
		SIZE : A1