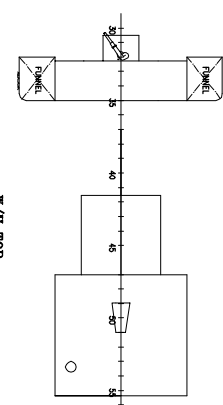
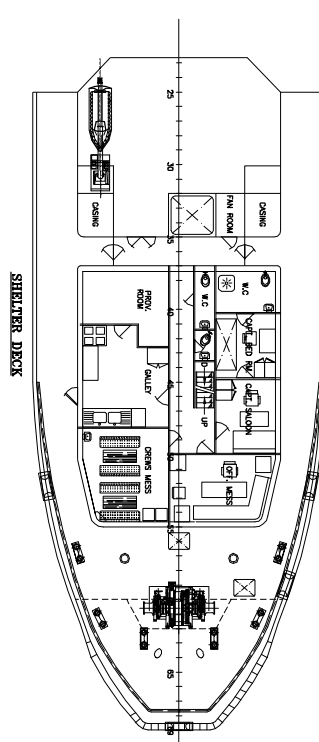
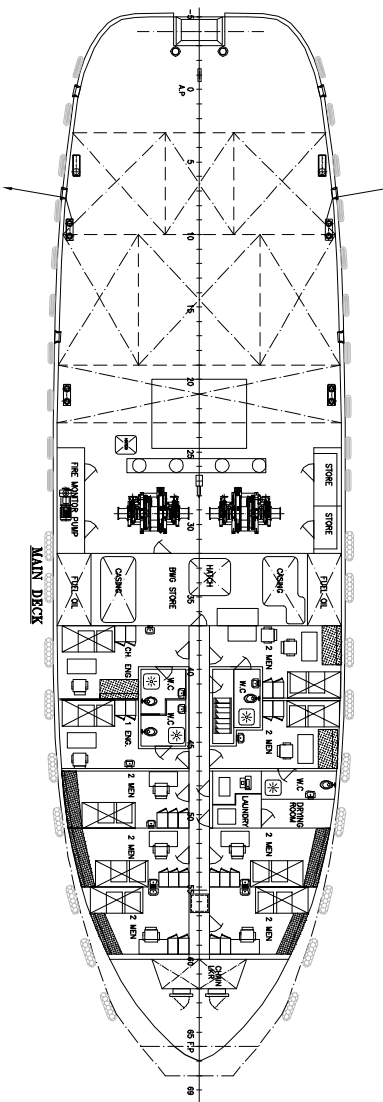
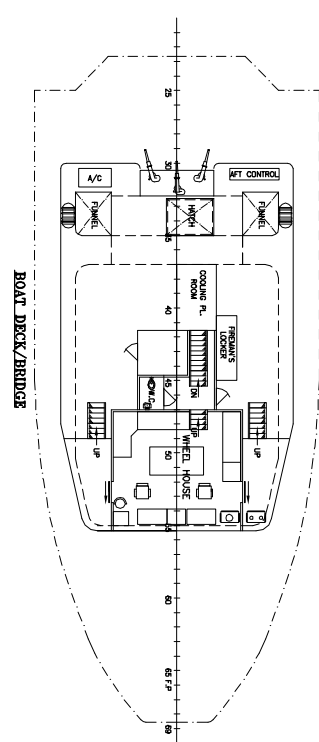
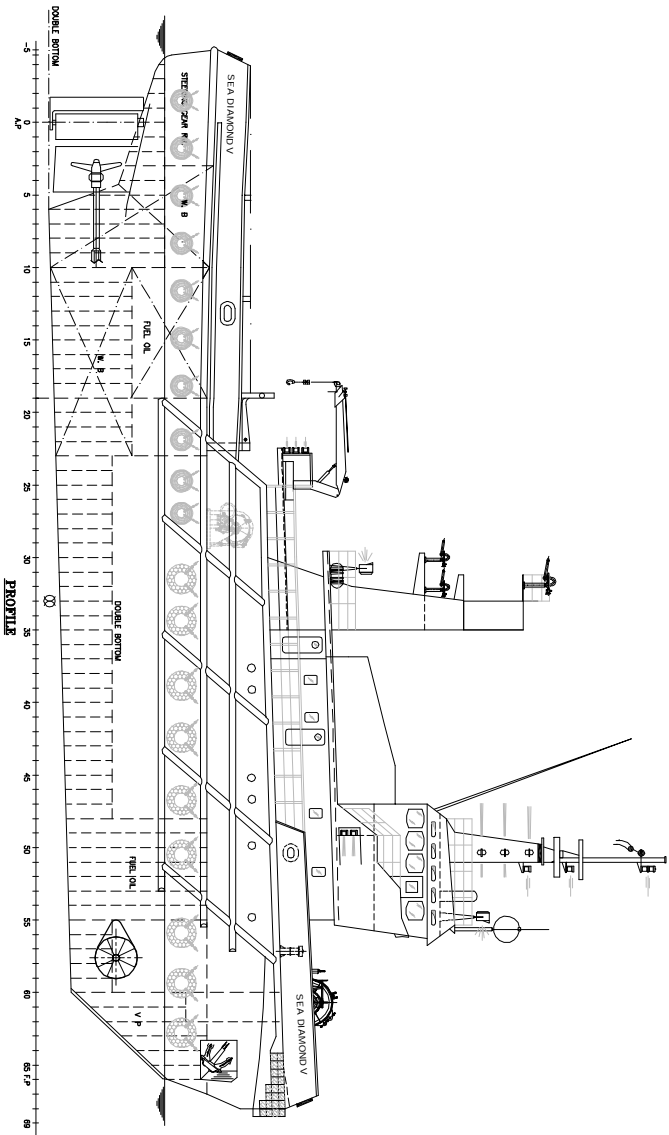


# GENERAL ARRANGEMENT PLAN - "SEA DIAMOND V"



**TWIN SCREW TUG**  
**DIMENSIONS:**  
 LENGTH OVER ALL = 44.70 M  
 LENGTH BETWEEN PP. = 36.60 M  
 BREADTH MOULDED = 10.80 M  
 DRAUGHT MIDSHIP M.D. = 4.00 M  
 DEPTH = 5.55 M  
 DISPLACEMENT = 1104.5 T

SEA DIAMOND V

REV	DESCRIPTION	DATE	SIGN

**ARIS MARINE & ENGG. SERVICES**  
 PO. BOX - 24486, SHEWAN, U.K.E  
 Tel: 00977(0)9 5614106 Fax: 00977(0)9 5614187  
 Email: aris@arismarine.com



This drawing, being correct, and specifications are the property of ARIS MARINE & ENGG. SERVICES and you undertake on a confidential basis with no exception understanding that they will not be used for any other purpose without the written permission of ARIS MARINE & ENGG. SERVICES. The recipient of this drawing shall not be held responsible for any errors or omissions which may appear hereon. This drawing was issued on 24/04/2004.

**GENERAL ARRANGEMENT PLAN**

VESSEL NAME: SEA DIAMOND V DATE: 24/04/2004 DWG. No.: DMS590/201  
 DRAWN BY: AB SHEET: 01 OF 01  
 CHECKED BY: AB SCALE: 1:100 REV: 0 SIZE: A1