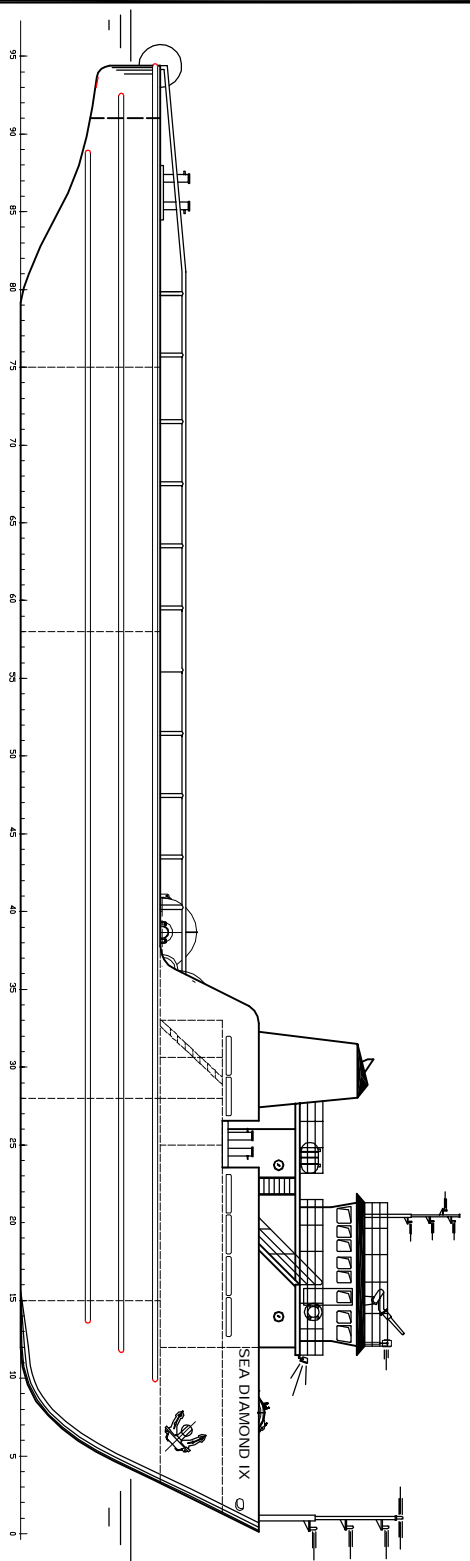
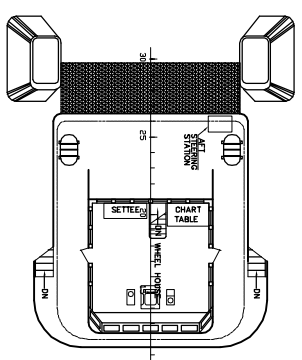


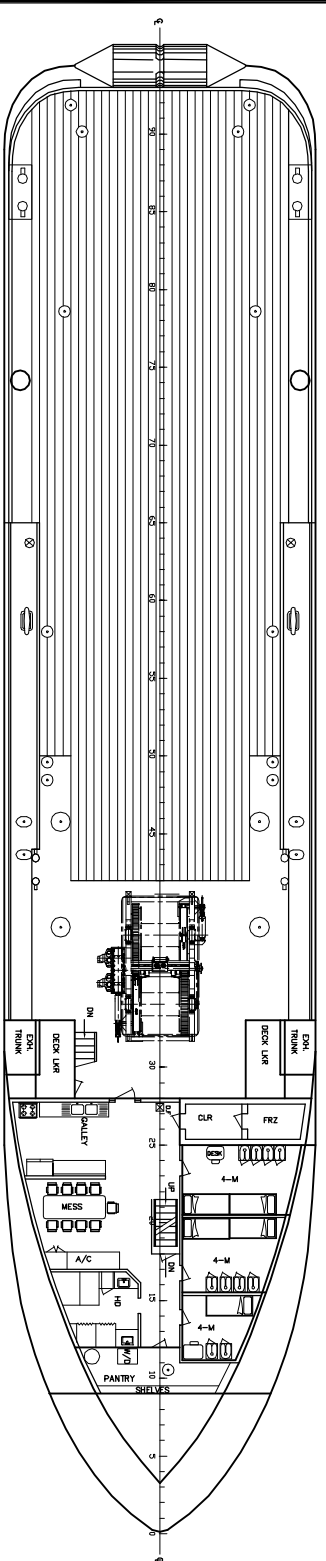
GENERAL ARRANGEMENT PLAN - SEA DIAMOND IX



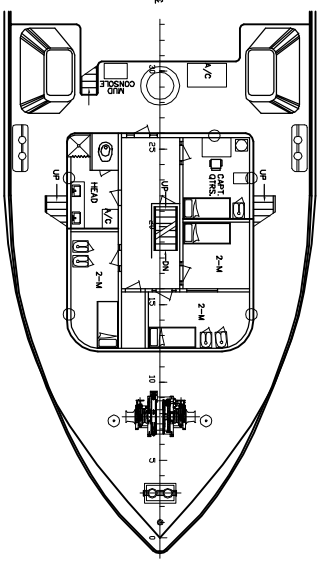
PROFILE VIEW



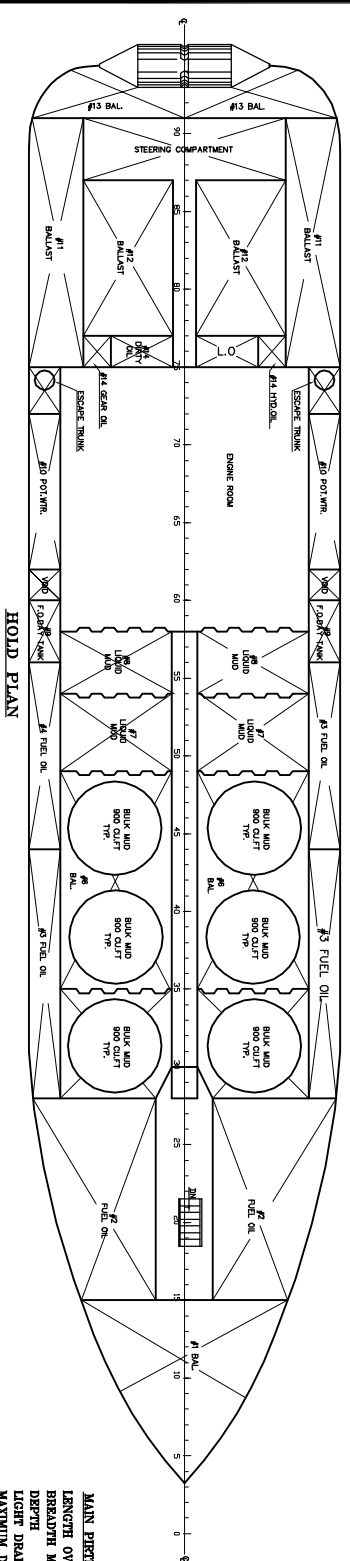
PILOT HOUSE DECK



MAIN DECK



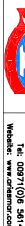
FOC'SIDE DECK



HOLD PLAN

MAIN PARTICULARS:
 LENGTH OVER ALL = 57.91 M
 BREADTH MOULDED = 12.10 M
 DEPTH = 4.27 M
 LIGHT DRAFT = 2.06 M
 MAXIMUM DRAFT = 3.85 M

REV	DESCRIPTION	DATE	SIGN



ARIS MARINE & ENGG. SERVICES
 P.O. BOX 2488, SINGAPORE, SINGAPORE
 Tel: 0065 (0) 6341 5811, Fax: 0065 (0) 6341 5817
 Website: www.arismarine.com, Email: aris@arismarine.com

This drawing, design concept and specifications are the property of ARIS MARINE & ENGG. SERVICES. It is not to be used for any other purpose without the written consent of ARIS MARINE & ENGG. SERVICES. The user of this drawing shall be responsible for any errors or omissions. The user shall be held liable for any damage or loss resulting from the use of this drawing. The user shall be held liable for any damage or loss resulting from the use of this drawing.

VESSEL NAME: M/V SEA DIAMOND IX	DATE: 02.04.05	DWG. NO.: 04824/201
DRAWN BY: JAB	COR. NO.: 04824	SHEET: 01 OF 01
CHECKED BY: JAB	SCALE: 1:100	REV: 0 SIZE: A1